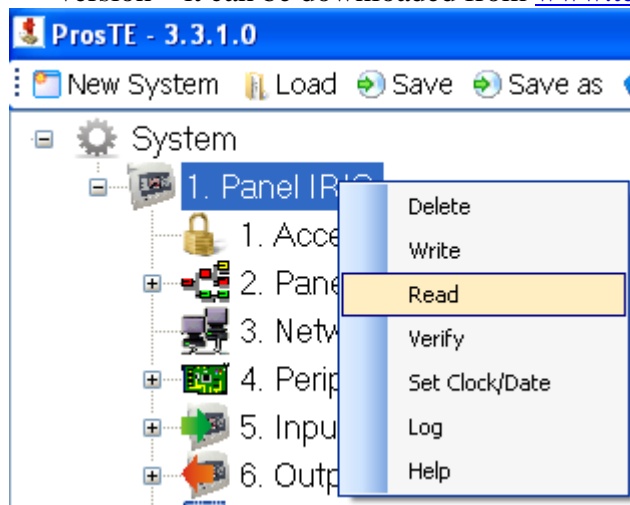


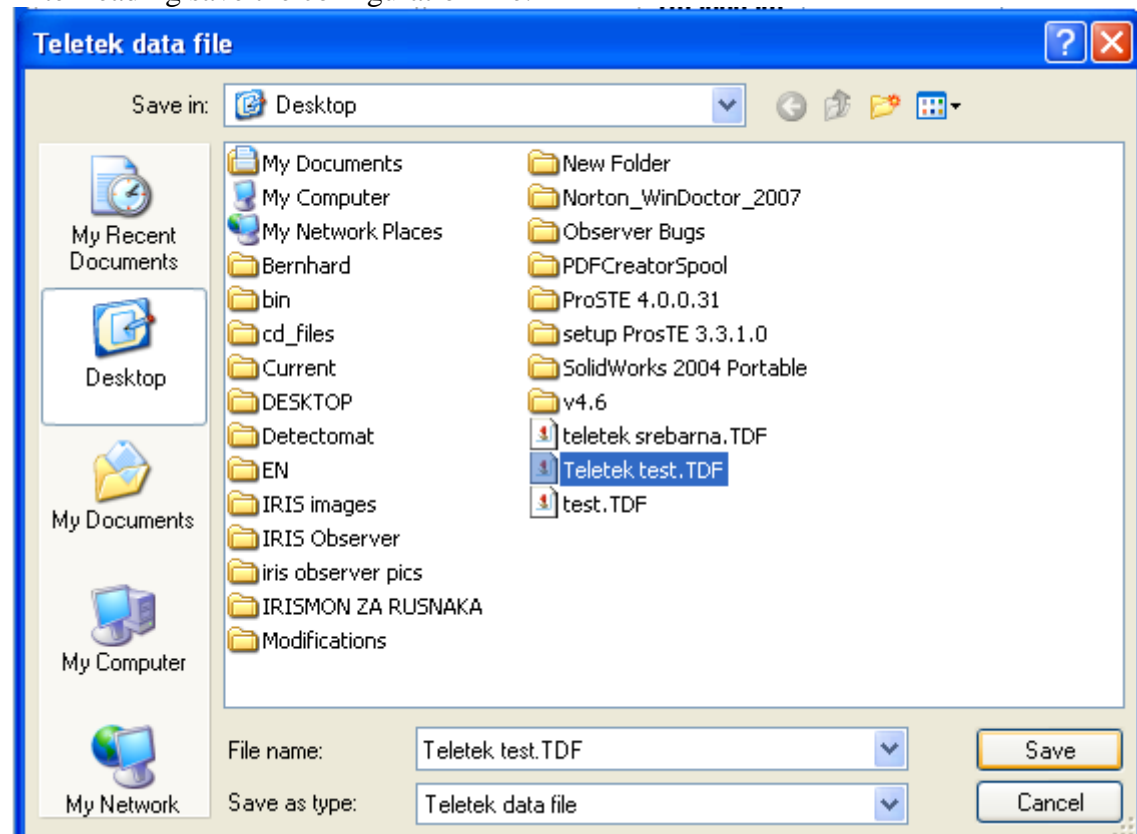
1. Teletek Observer works with IRIS panels version 3.5 or later!!!
2. Install Teletek Observer on your PC.



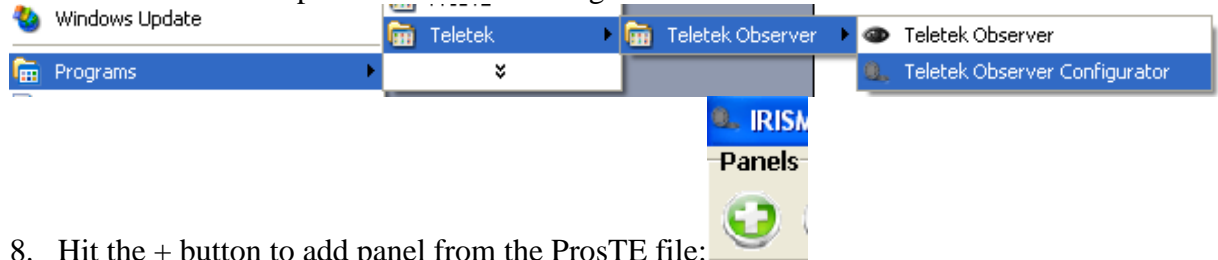
3. Put the hardware key in your computer:
4. Set and IP address in the IRIS
Panel>System>Programming>Panel>Network>Network Settings>MORE
5. After you set IP address go back and enable the network from the button in the menu.
6. To add Iris panel first read the configuration with ProsTE software (At least 3.3.1.0 version – it can be downloaded from www.teletek-electronics.com):



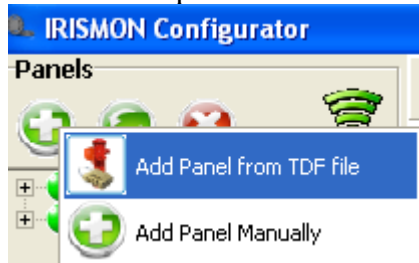
After reading save the configuration file:



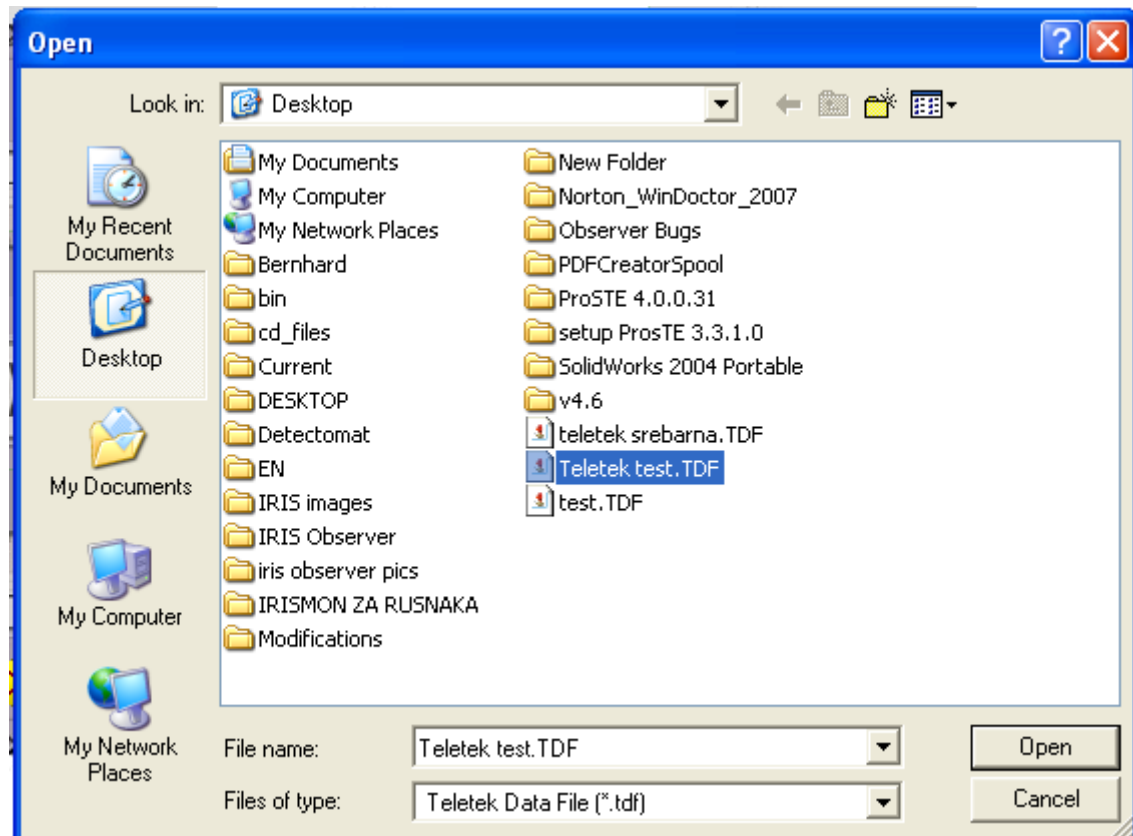
7. Close ProsTE and pen the Observer configurator:



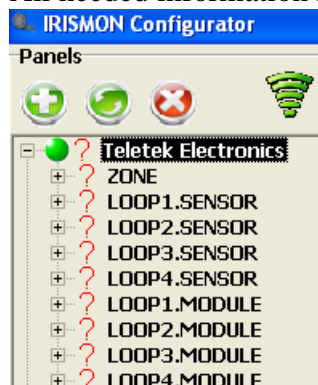
8. Hit the + button to add panel from the ProsTE file:



Then choose: and load the ProsTE file.



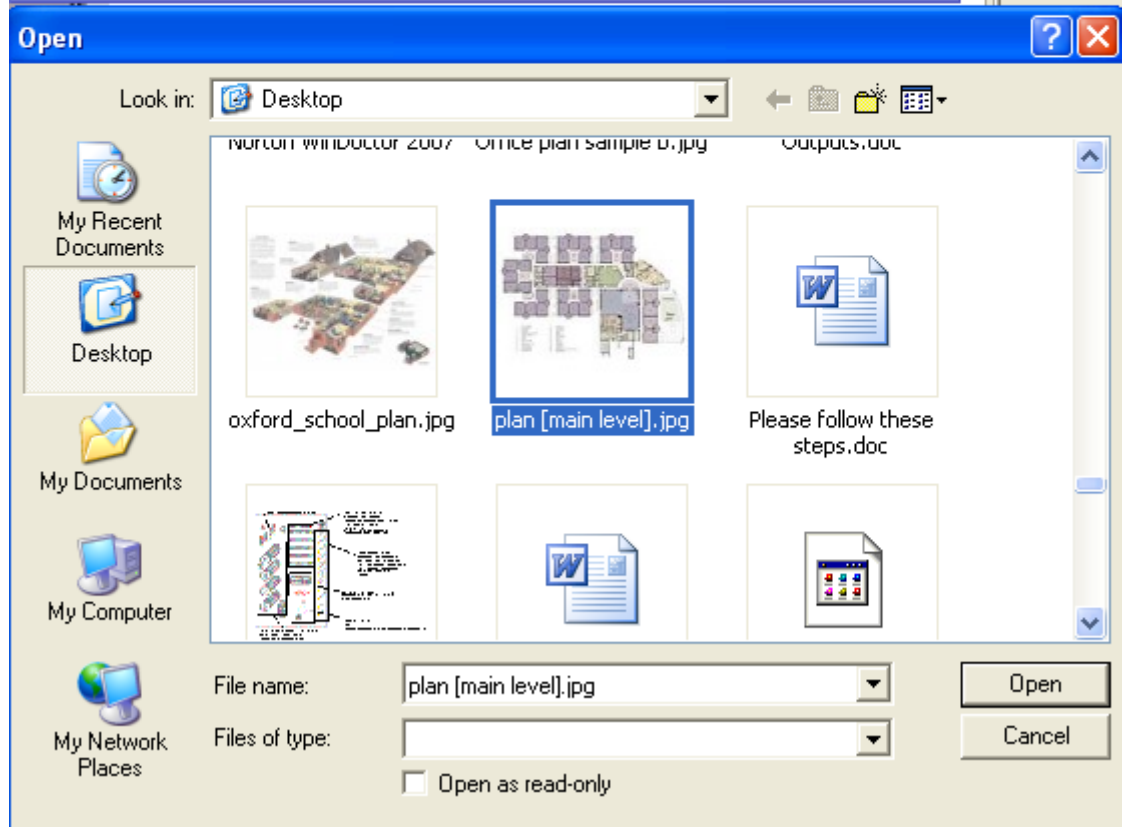
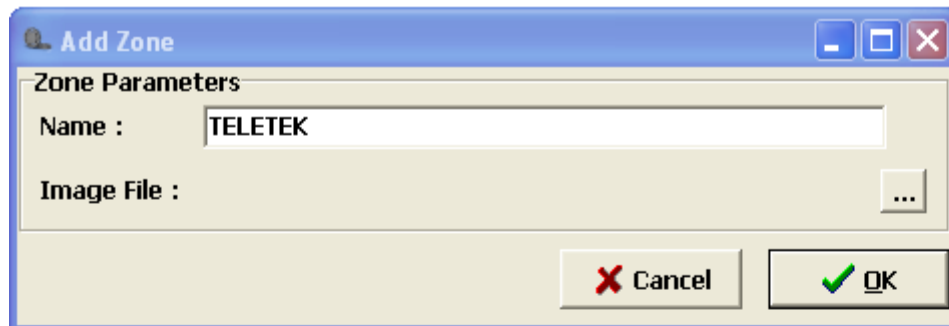
9. Then You have loaded the panel settings of the panel:
All needed information is taken from the Proste file:



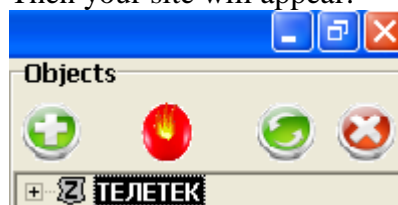
10. Go at the right side of the screen and make an Object (Site):



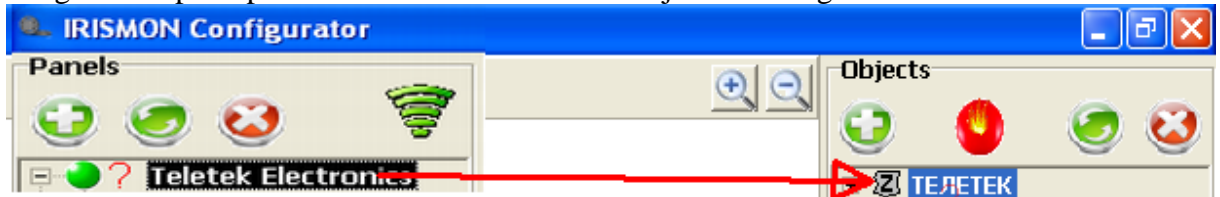
. Hit the + to add new main site.



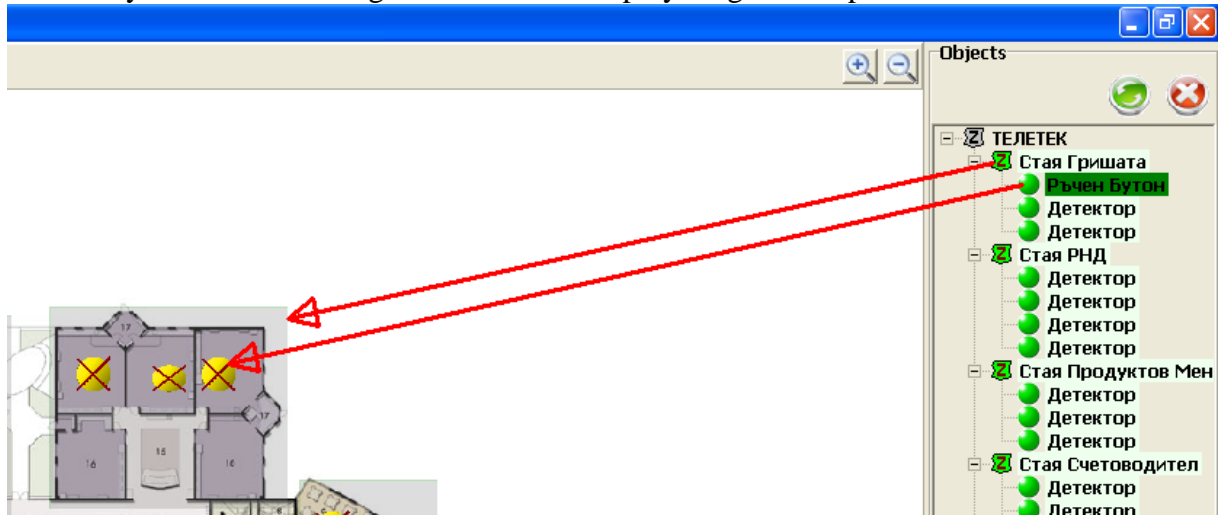
Then your site will appear:



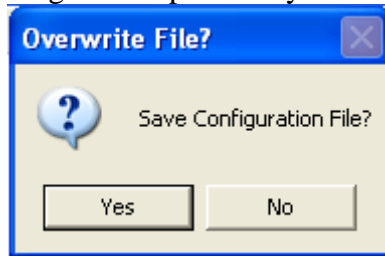
11. Drag and drop the panel from the left side to the object in the right side:



12. Now you can start adding devices on the map by drag and drop them:



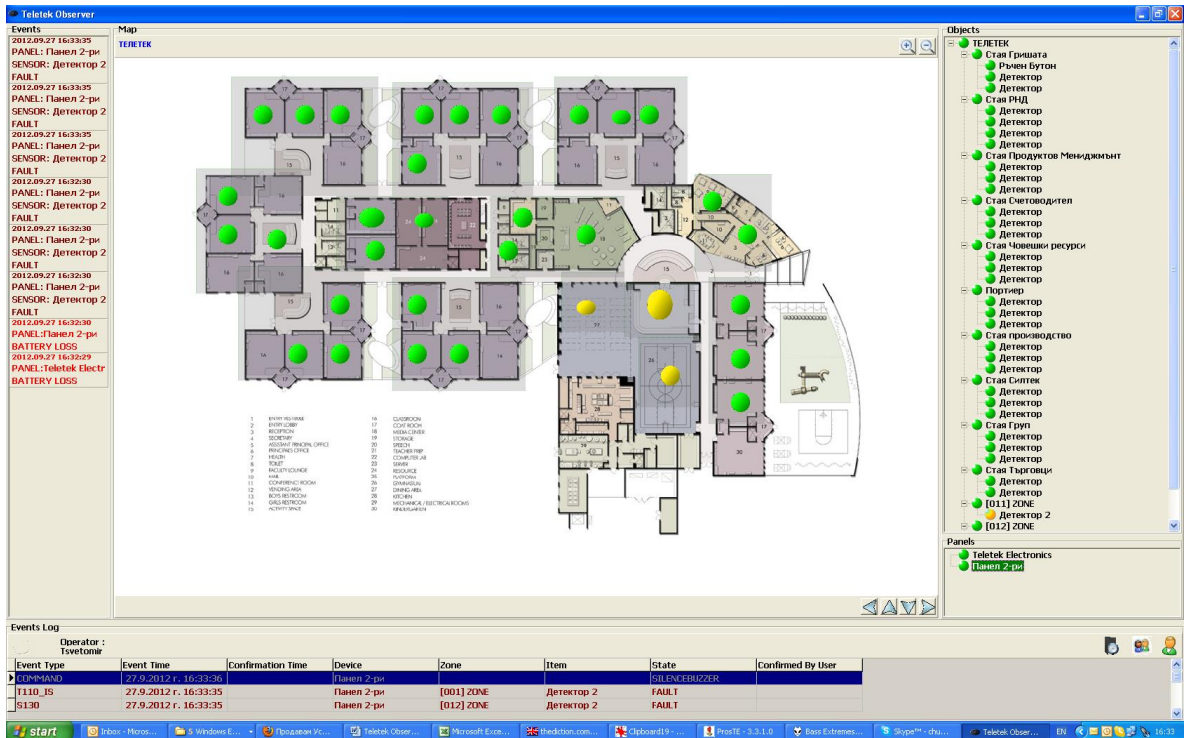
Before adding or after adding detectors you could frame the zones by the same method drag and drop. When you are done hit close and save the configuration:



13. Open:

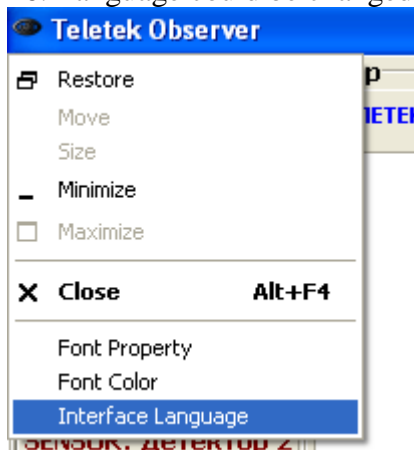


14. The Users are User and Admin: passwords are the same user and admin

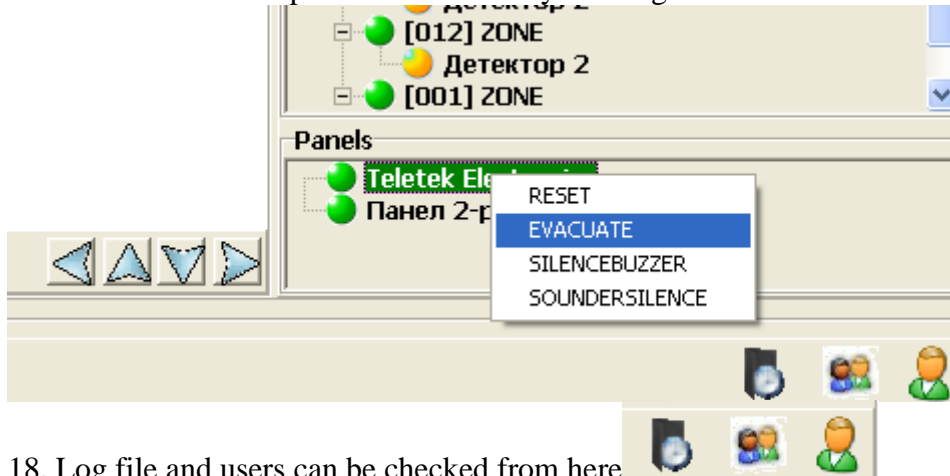


15. If everything is done by the points above you should see the panels and the detectors green. In the left side you will see events which can be confirmed by clicking over them.

16. Language could be changed from here:



17. Commands to the panel can be send by clicking over it:



18. Log file and users can be checked from here