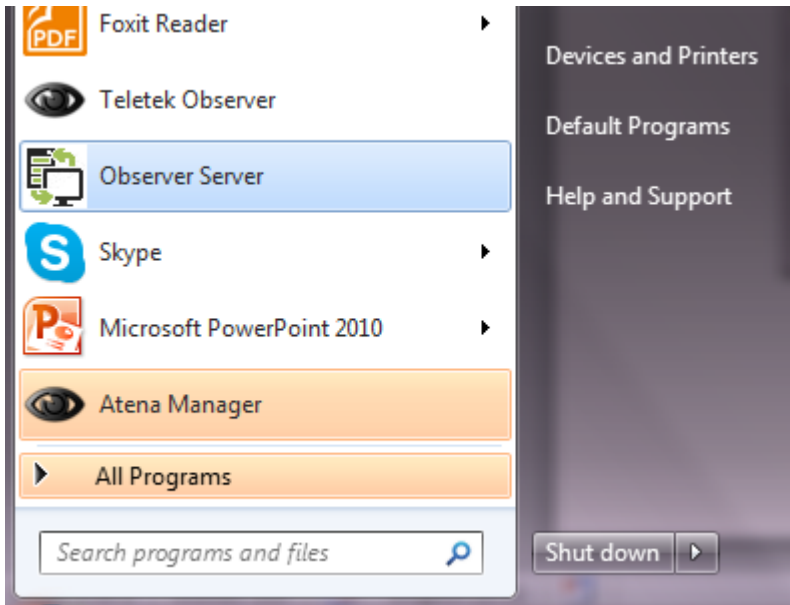
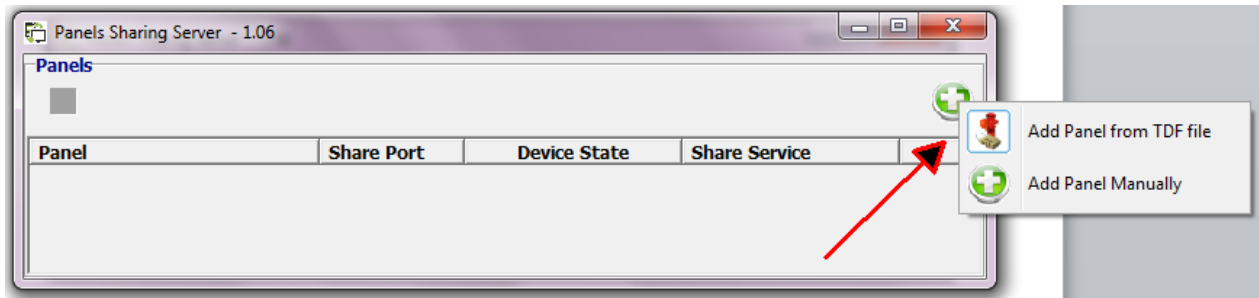


Using Observer Server application (allows connection of up to 10 Computers to up 32 panels network)

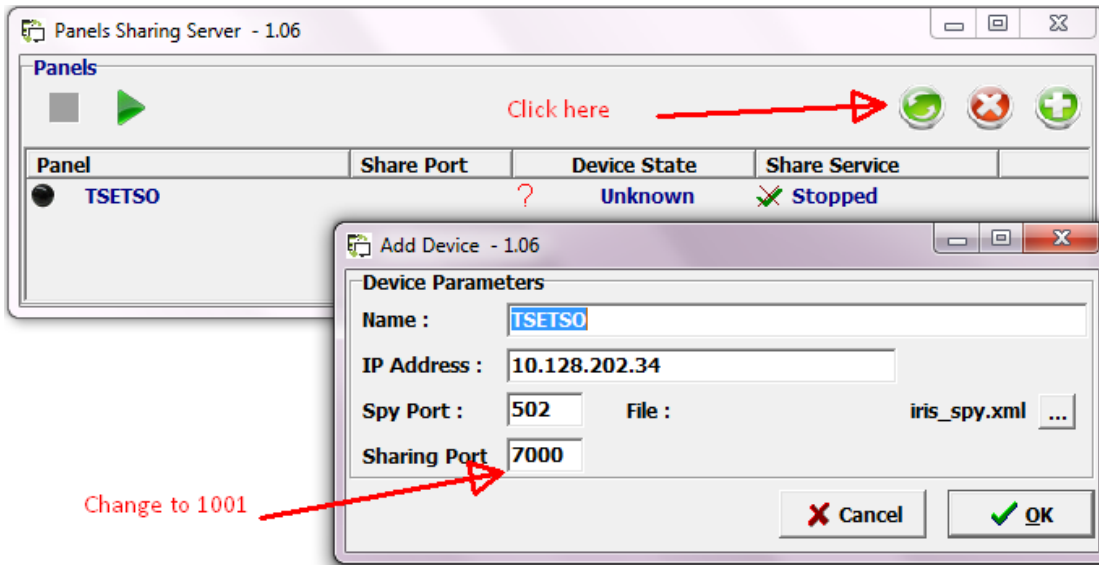
- 1) Run the server



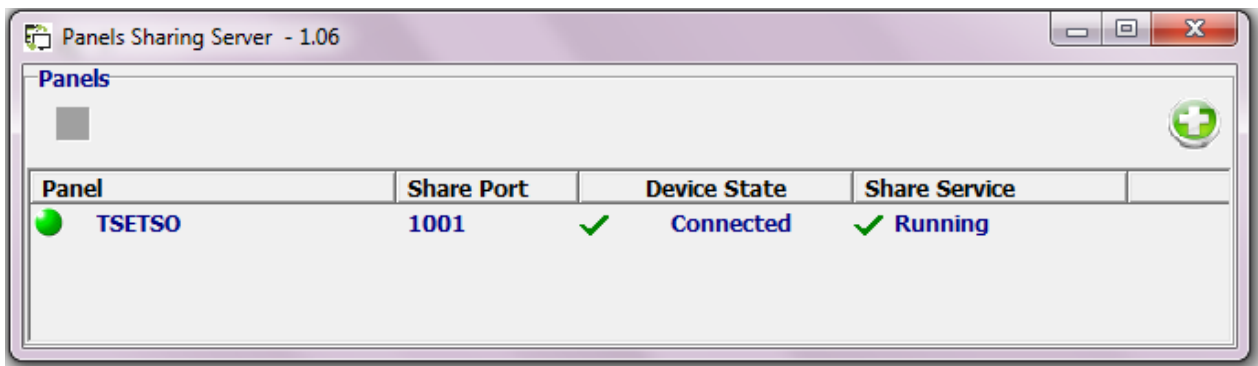
- 2) Using the green „+“ button add the ProSTE files which have been read from the panels, as in the regular Observer software.



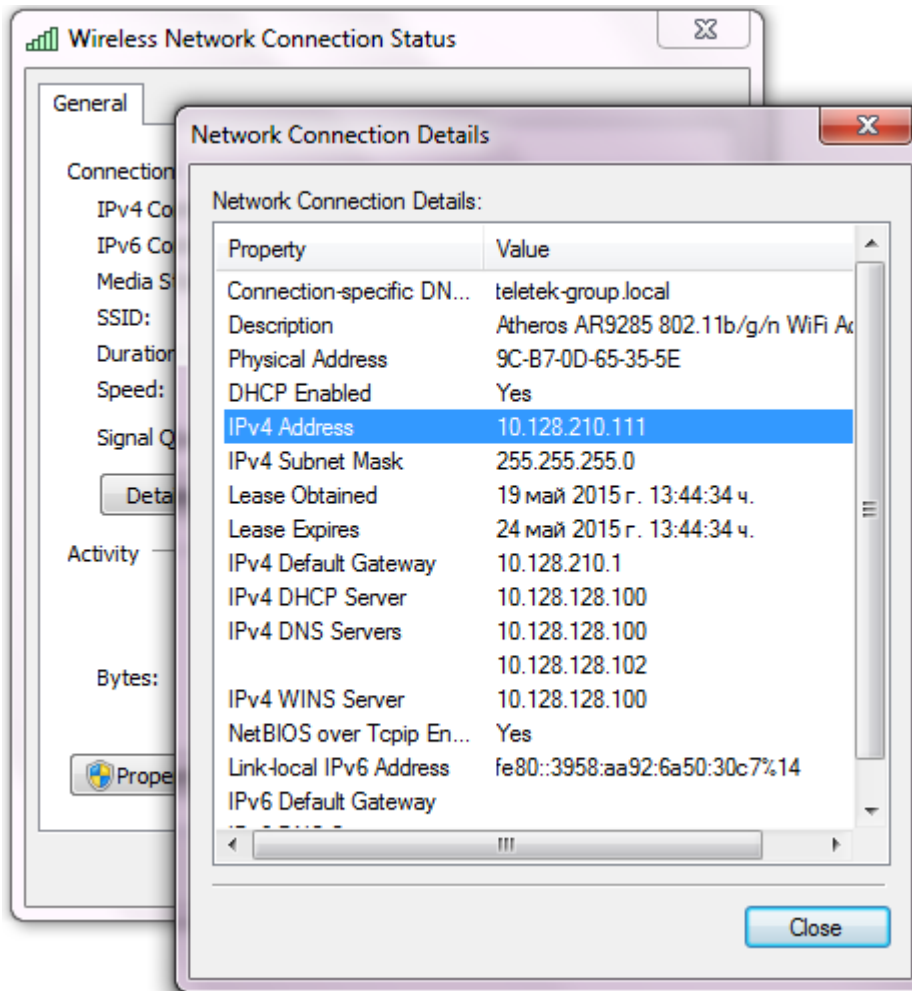
- 3) Click the Edit button and change the sharing port to 1001 (1002 for the second panel and 1010 for the tenth). This will be done automatically in the official version. Confirm the change.



The panel will run automatically after the change of the sharing port.

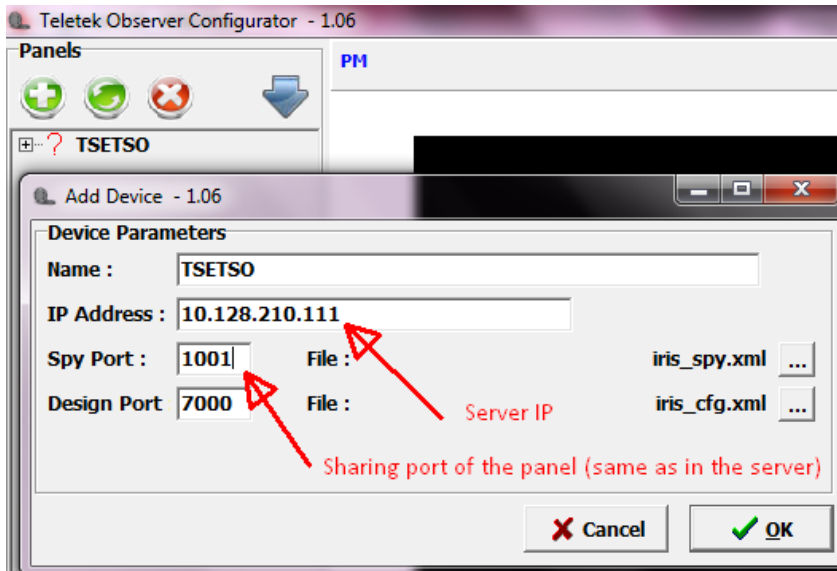


- 4) Check the IP address of the computer on which you run the Server application (this will be the IP to which can connect from other PC-s with installed Observer):



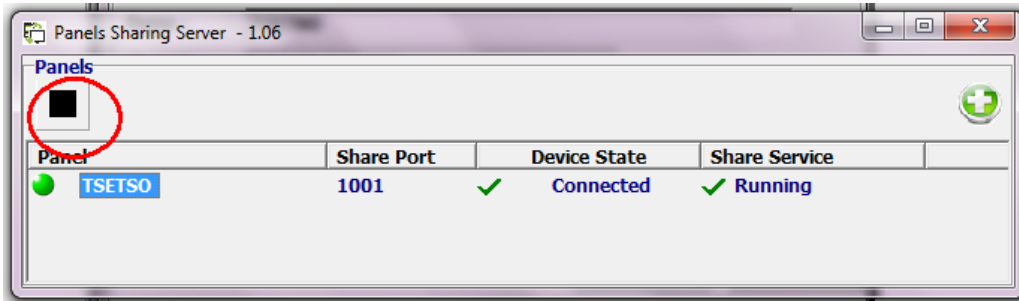
It appear to be 10.128.210.111

- 5) Open the Observer Configurator and load the TDF files as regular or if you have an already working setup you just edit the IP and the Spy port of each panel so the software communicates with the server instead directly with the panel:



Apply the changes and complete setting up the project as usual. Close the configurator and run the regular observer.

To check if the connection is going via the server stop the communication with the panel by the black stop button so it has to appear as missing in the Observer:



Then play it back again:

